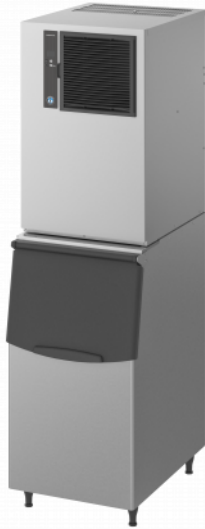




CUBER, MODULAR IM-240ANE-HC

Product series: IM

Item number: E1GA-D100



This modular cube ice maker uses Natural Refrigerant R290, which is environmentally friendly and energy efficient. It is part of a unique range of cubers; designed with hygiene as a priority. Each ice cycle is made with fresh water ensuring the highest quality of ice. The cubes are easily recognized by its precise shape, clarity and slow dilution. This is particularly important for ice that is used in premium beverages like cocktails, as it protects the integrity and flavour of the drink. This model is configured with our storage bins.

- Unique ice making system that has an automatic rinse cycle. After every new batch of ice, the water reservoir drains and refills with fresh water.
- System comes with a magnetic water pump that has no direct coupling, which prevents any leakage.
- Closed water circuit offers the ultimate contamination protection, by reducing the number of points at which impurities can enter the ice making process.
- Electronically controlled to ensure an optimised ice making process under varying circumstances without the need for physical adjustments. Quality of ice is always consistent.
- Easily cleanable air filter allows end-users to carry out routine cleaning schedules. Extends product life expectancy and reduces the frequency and costs of maintenance call-outs.
- Stainless steel frame inside

SPECIFICATIONS

Product title	Cuber, Modular
Production capacity (kg/24h) approx.	195
Electric connection	1/220 - 240V/50Hz
Electric connection Load (kW)	0.93
Outside Dimensions W x D x H (mm)	560 x 700 x 880
Ice type	L Cube - standard

Refrigerant	R290
Cooling system	Air Cooled
Product configuration	Modular
Net weight (kg)	78
Gross Weight Packed (kg)	89
Corresponding bin(s)	B140SA, B210SA, B340SA

