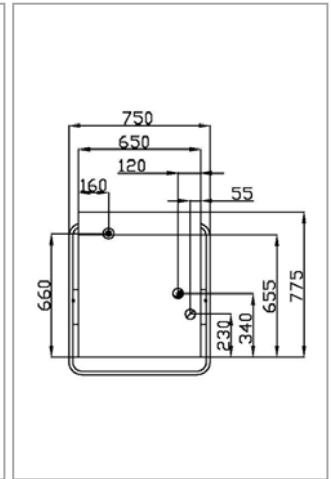
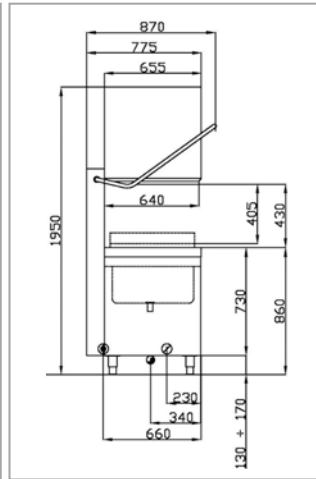
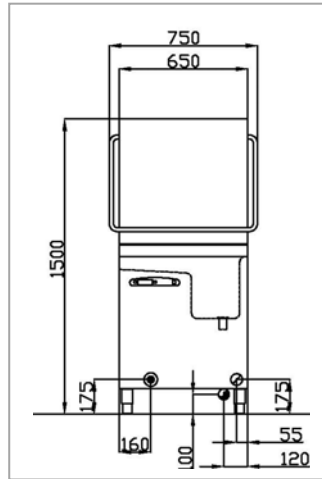


Optima Range Warewasher

OD1400A D



FEATURES



- Double skin cabinet construction reduces energy costs, noise levels and keeps the wash area ambient temperature to an absolute minimum.
- Specially designed stainless steel, indented anti-clog wash and rinse arms, easily removed for cleaning without tools.
- Pressed wash tank with sloping bottom and double inox filters for hygiene and easy maintenance.
- High efficiency, self-draining wash pumps for greater hygiene and ultimate washing power.
- Integral peristaltic detergent and rinse aid dosing, adjustable via the control panel.
- WRAS approved break-tank delivering guaranteed rinse results.
- Thermo-lock rinse system to ensure desired rinse temperatures are achieved before initialising the rinse phase of the wash cycle.
- Atmospheric boiler ensures a constant rinse temperature is delivered throughout the rinse phase.
- Optima electronic control panel with 45x60mm HiRes TFT display provides comprehensive machine information.
- 4-colour status information lights to transmit user-friendly at-a-glance information on the status of the machine.
- Energy saver stand-by mode.
- Wash and rinse temperatures displayed throughout the wash cycle.
- Adjustable cycle times
- Auto-self cleaning wash tank cycle at the end of service.

TECHNICAL INFORMATION

	(sec.)	Baskets/h*	Dishes/h*
Electronic control panel with TFT 45x60 mm colour HR display			
Wash cycle P1	80	45	810
Wash cycle P2	120	30	540
Wash cycle P3	180	20	360
Wash cycle P4	480	7	126
Basket size	500 x 500 mm 18 plate capacity		
Wash pump: power / capacity	1,1 kW / 503 l/min		
Rinse booster pump: power / capacity	0,18 kW / 130 l/min		
Elements: tank / boiler	4.5 kW / 6 kW		
Water supply: temperature / pressure / hardness	max. 55°C // 200 - 400 kPa // min. 7 max. 12°F **		
Wash temperature / rinse temperature	60°C / 83°C		
Tank capacity / boiler capacity / water consumption per cycle	30l / 5,5l / 2,8l		
Total power / Voltage	7,1 kW – 240V 50Hz (3Ph 415V available on request)		

* theoretical production with water supply at 50° C ** above 12° F we suggest a water softener: Please note that internal water softeners are only suitable for cold water (< 30°C)

EQUIPMENT

Baskets	1 cup, 1 dish racks, 1 cutlery
Pipes (1 each)	1 water inlet, 1 drain, 1 clear rinse aid dosing, 1 red detergent dosing

OPTIONAL

- Internal water softener with automatic cycle and salt low warning. (IS)
- Steam extractor heat recovery module (SHR) (adds 175mm to machine height)