

Technical data sheet for

GAS CHARGRILL 300mm, 600mm, 900mm, 1200mm

G592-B, G594-LS, G596-LS, G598-LS

- Heavy-duty construction
- Reversible heavy-duty top grates
- Interchangeable drop on griddle plates
- 9.8kW stainless steel burners per 300mm section
- Rear rollers
- Stainless steel exterior
- Easy clean
- Easy service
- Fully modular



G594-LS

Overall Construction

Chargrill

- 2.5mm thick stainless steel side splash guards
- Welded 1.5mm stainless steel bull nose
- Side panels 1.2mm stainless steel
- Splashback 1.2mm stainless steel
- Enamelled control panel
- Front grease channel
- Welded 1.2mm stainless steel grease trays
- 1.5mm aluminised steel burner box
- Insulated sides

Leg stand

- Fully modular for matched suite finish
- Framed top for connection to Chargrill
- 63mm dia. heavy-duty 1.2mm stainless steel legs with two adjustable feet at front and two rollers at rear
- Fully modular framed stand shelf with 0.9mm stainless steel finish
- Quick assembly design

Grates and radiants and baffles

- 150mm wide x 550mm top grate sections
- Top grates reversible for level or inclined use
- Inclined position incorporates flare reducing grate fin design with grooves to run grease into front collection channel
- Heavy weight castings for high demand performance
- Heavy-duty high efficiency cast iron burner radiants improve heat retention and protect burners
- Baffles over grease trays to reduce grease collection flare ups

Griddle plates

- Optional extra 300mm wide and 450mm wide x 550mm deep drop on cast iron griddle sections
- Machined smooth surface finish
- Interchangeable in any position with 2 or 3 sections of top grate
- Multiple griddle sections can be mixed in any positions

Burners

- Full stainless steel burners
- 1 x 9.8kW burner per 300mm section
- Removable for cleaning
- Full pilot and flame failure protection per burner

Controls

- Individual Hi-Lo gas control to each burner with flame failure and pilot
- Large easy use control knob - heat resistant reinforced
- Easy view control settings on knob
- Piezo ignition to pilot burner

Cleaning and Servicing

- Easy clean stainless steel external finish
- Lift out radiants, burners and grease tray baffles
- All burner box interior parts lift out for full cleaning access
- Deep stainless steel grease collection drawers
- Access to all parts from front of unit

Technical data sheet for

GAS CHARGRILL 300mm, 600mm, 900mm, 1200mm

Specifications

Burner

9.8kW stainless steel U-burner per 300mm section

Gas power (gross)

G592-B 9.8kW, 33,400 Btu/hr
 G594-LS 18.6kW, 66,800 Btu/hr
 G596-LS 29.3kW, 100,000 Btu/hr
 G598-LS 39.1kW, 133,500 Btu/hr

Cooking surface area

G592-B 292mm x 500mm, 1460cm²
 G594-LS 592mm x 500mm, 2960cm²
 G596-LS 892mm x 500mm, 4460cm²
 G598-LS 1192mm x 500mm, 5960cm²

Gas connection

R³/₄ (BSP) male

All units supplied with Natural and LP gas regulator

Dimensions

Width

300mm G592-B

Depth 812mm

Height 315mm

Incl. splashback 485mm

600mm G594-LS

900mm G596-LS

1200mm G598-LS

Depth 812mm

Height 915mm

Incl. splashback 1085mm

Nett weight

300mm G592 63kg

600mm G594 128kg

900mm G596 178kg

1200mm G598 227kg

Packing data

300mm

0.20m³, 86kg

Width 865mm

Depth 345mm

Height 665mm

600mm

0.48m³, 171kg

Width 645mm

Depth 870mm

Height 855mm

900mm

0.70m³, 232kg

Width 945mm

Depth 870mm

Height 855mm

1200mm

0.93m³, 295kg

Width 1245mm

Depth 870mm

Height 855mm

Gas types

Available in Natural gas and LP gas, please specify when ordering
 Units supplied complete with gas type conversion kits

Options

Adjustable feet at rear

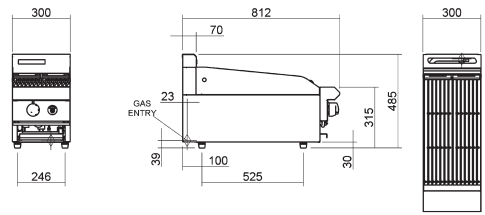
Griddle plates 300mm drop on

Griddle plates 450mm drop on

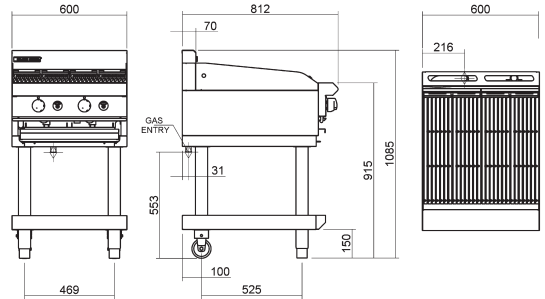
Joining caps

Castors

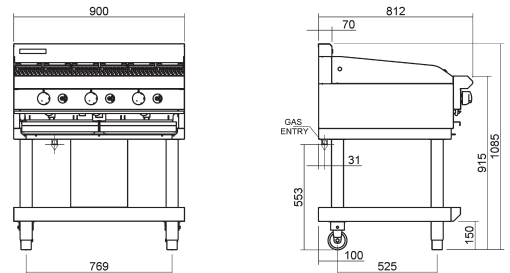
G592-B



G594-LS



G596-LS



G598-LS

